

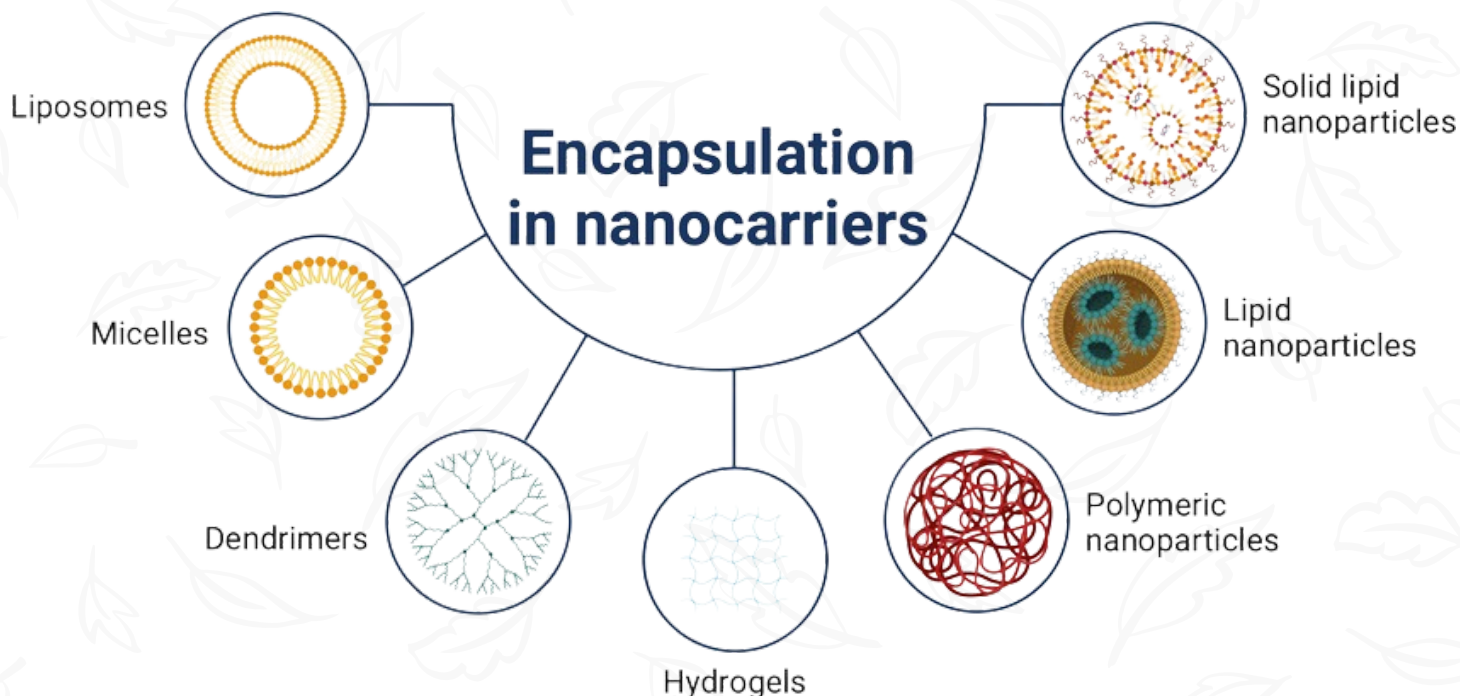


kalptaru

Naturals



ABOUT



At Kalptaru Naturals, we take pride in offering a wide range of innovative and effective ingredients that cater to the evolving needs of the personal care industry. Our portfolio includes solutions designed to enhance the efficacy and appeal of your products, and we believe these could be of significant value to your brand.



SKIN LIGHTENING



PRODUCT NAME	INCI NAME	APPLICATION	MAKE	DOSAGE
TranEX 1	Water, Butylene Glycol, Caprylyl Glycol, 1,2-Hexanediol, Tranexamoyl Dipeptide-23	Skin whitening, tone correction, low toxicity, pigmentation reduction. Patented molecule	A&PEP	3-7%
SCH ShellCare TRAX	Aqua Polycaprolactone Xanthan gum Tranexamic acid Caprylic capric triglyceride Polyvinyl alcohol Sorbitan stearate Propanediol 1, 2-hexanediol Caprylyl glycol	Encapsulated. Evens tone, fades dark spots, reduces melanin, treats hyperpigmentation	Special Chemicals	3-7%
SCH ShellCare TRAX Plus	Aqua Polycaprolactone Xanthan gum Tranexamic acid Nonapeptide1 Polyvinyl alcohol Sorbitan stearate Propanediol 1, 2-hexanediol Caprylyl glycol	Encapsulated. Evens tone, reduces dark spots, promotes uniform complexion, blocks melanin, treats hyperpigmentation.	Special Chemicals	3-7%
SCH ShellCare GlucoTrax	Aqua Polycaprolactone Xanthan gum Gluconolactone Tranexamic acid Polyvinyl alcohol Sorbitan stearate Propanediol 1,2-Hexanediol Caprylyl glycol	Encapsulated. Brightens tone, reduces dark spots, gently exfoliates, soothes redness and irritation	Special Chemicals	3-7%
SCH ShellCare Vit C	Aqua Polycaprolactone Xanthan gum Ascorbic acid Polyvinyl alcohol Sorbitan stearate Propanediol 1,2-hexanediol Caprylyl glycol	Encapsulated. Antioxidant protection, evens tone, reduces dark spots, soothes irritation.	Special Chemicals	3-7%

SCH ShellCare® Vit C A	3-O-Ethyl Ascorbic Acid (15–20%)	Antioxidant, fades dark spots, melasma, and hyperpigmentation, anti-aging, reduces inflammation	Special Chemicals	1–5%
V-peptide 2 (0.1%)	Water, Butylene Glycol, Glycerin, 1,2-Hexanediol, Caprylyl Glycol, Nicotinoyl Dipeptide-23	Whitening, skin tone improvement	A&PEP	3 –10%
Pro Multi White Cysteine	S - Syringoyl Acetyl Methyl Cysteinate	Skin whitening effect, Anti- inflammatory effect, Skin moisturizing Effect. 0.1% dosage.	Daebong	0.1%
SCH Peptcare N1	Nonapeptide-1	Whitening, anti-spot	Special Chemicals	



ANTI AGING



PRODUCT NAME	INCI NAME	APPLICATION	MAKE	DOSAGE
Finexell-T11	Water,ButyleneGlycol,Glycerin, Lactobacillus/ CollagenFermentFiltrate, CaprylylGlycol, 1,2 Hexanediol,Hexapeptide-9, Tripeptide-29,Tripeptide1, AcetylHexapeptide-8	Anti-Aging, Anti-Wrinkle	A&PEP	3-10%
APEPAHP- 0.05%	Acetyl Hexapeptide-8	Botox replacement. Anti-Aging, Anti-Wrinkle	A&PEP	3-7%
Icella	Lactobacillus/Collagen/Mesembryant hemum Crystallinum Leaf Extract Ferment Lysate, Caprylyl Glycol, 1,2-Hexanediol	Moisturizing, anti-oxidation, skin lifting	A&PEP	10%
Lavieen-F	Bacillus/Artemisia Vulgaris Extract Ferment Filtrate, Butylene Glycol, 1,2-Hexanediol, Ethylhexylglycerin	Skin regeneration, Anti-wrinkle,	A&PEP	10%
SCH ShellCare RR	Aqua Polycaprolactone Xanthan gum Resveratrol Oryza sativa bran oil extract polyvinyl alcohol Sorbitan stearate Propanediol 1,2-Hexanediol Caprylyl glycol	Encapsulated. Soothes and calms inflammation , Promotes even skin tone and brightness, Boosts collagen for firmer, more elastic skin, Protects skin from damage with antioxidants, Hydrates and nourishes for softer skin	Special Chemicals	
SCH ShellCare RP	Retinyl Palmitate	Encapsulated. ANTIAGING	Special Chemicals	

BerryPEP	Panax Ginseng Berry Extract, Lactobacillus/Ginseng Root Ferment Filtrate	Anti-Oxidant, Anti-aging	A&PEP	1-10%
SCH Actives B-TOX	Aqua Xanthan gum Acetyl hexapeptide-8 Palmitoyl pentapeptide-4 Propanediol 1, 2-hexanediol Caprylyl glycol	Provides a rejuvenating effect, improving the firmness and elasticity of the skin. Reduces wrinkles and fine lines through muscle relaxation	Special Chemicals	
VolcanEX-F	Bacillus/Houttuynia Cordata Leaf Extract/Volcanic Ash Ferment Filtrate, Bacillus/Spirodela Polyrhiza Extract/Volcanic Ash Extract Ferment Filtrate, Caprylyl Glycol, 1,2-Hexanediol	Anti-Inflammation, Anti-Aging, Anti-Oxidant	A&PEP	10%
Microsponge 720RE	Cellulose, Retinol, Caprylic/Capric Triglyceride and BHT	Anti-aging and skin rejuvenation, Cellulite treatments	Amcol	
RetinEZ	Cellulose, Retinol, Ascorbic Acid, Polysorbate 20 and Tocopherol	Anti-aging and skin rejuvenation products	Amcol	
Pro Hydrolyzed Collagen	Hydrolyzed Collagen / Butylene Glycol / 1,2-Hexanediol / Caprylyl Glycol / Water	Moisturizing, Wrinkle improvement, Whitening	Daebong	
Bifida Repair System™	Bifida Ferment Lysate, Caprylyl Glycol, 1,2-Hexanediol	Skin rejuvenation, Anti-aging, Strengthens skin barrier,UV protection, Improves skin tone and hydration, Moisturizing and non- sticky	A&PEP	0.025- 0.4%
Reincar Booster-1	Water, Butylene Glycol, 1,2-Hexanediol, Ethylhexylglycerin, Tripeptide-72	Anti-aging, Skin cell regeneration,Acne symptom relief (as per SCI journal evidence), Korean patent holder	A&PEP	0.1-2%
ApepBiosix-5	Hexapeptide-9	Skin regeneration, Wound healing/ scar recovery, Anti-aging,	A&PEP	
Phenoliva Active 10	Olea Europaea (Olive) Fruit Extract, Citric Acid	Skin brightening (Inhibit Melanin synthesis), Skin soothing, Anti- aging, Antioxidant, UV protection, Skin healing	GAIA TECH	0.1-1%

HAIR CARE



PRODUCT NAME	INCI NAME	APPLICATION	MAKE	DOSAGE
STELLA -600	Water, Sodium PCA, Sodium Lactate, 1,2-Hexanediol, Polyquaternium-10, Arginine, Aspartic Acid, Threonine, Valine, Proline, Glycine, Isoleucine, Phenylalanine, Alanine, Histidine	Hair Damage, Conditioning, Colour Protect	A&PEP	
Actigrowth 10(P)	Alanine/Histidine/Lysine Polypeptide Copper HCL	Hair loss improvement	A&PEP	3-10%
Lavieen -F	Bacillus/Artemisia Vulgaris Extract Ferment Filtrate, Butylene Glycol, 1,2-Hexanediol, Ethylhexylglycerin	Anti-Hair loss	A&PEP	
Vital Growth-1	Myristoyl Pentapeptide-4	Hair follicle development and growth, Promote collagen production in hairycells	A&PEP	3-10%
SCH ShellCare SCALP	Aqua Polycaprolactone Xanthan gum Copper tripeptide-1 Tripeptide-10 citrulline, Cucurbita pepo seed extract, Ellagic acid Tetrahydrocurcumin Sodium hyaluronate Polyvinyl alcohol Sorbitan stearate Propanediol 1,2-Hexanediol Caprylyl glycol	Encapsulated. Reduces hair loss, Reduces sebumproduction and improves scalp balance, growth of new hair. 90 days and 150 days study available.	SPECIAL CHEMICALS	3-7%

FINEXELL-T11	Water,ButyleneGlycol,Glycerin,Lactobacillus/CollagenFermentFiltrate,CaprylylGlycol,1,2-Hexanediol,Hexapeptide-9, Tripeptide-29,Tripeptide-1,AcetylHexapeptide-8	ANTIAGING, ANTIWRINKLE	A&PEP	3-10%
Lifting Core	Hexapeptide-9, Hexapeptide-67 Palmitate, Hexapeptide-11, Acetyl Hexapeptide-8, Acetyl Tetrapeptide 5, Lactobacillus/(Lemon/Orange) Peel Extract Ferment Filtrate, Lactobacillus/Mesembryanthemum Crystallinum Extract/Collagen Ferment Lysate, Polyglutamic Acid	Wrinkle Reduction, Wound Healing & Scarless Repair, Improvement of Dermal Density,Boosting Skin Elasticity, Moisturizing,Whitening and Antioxidant Effects, Atopy relief & anti-inflammatory effects	A&PEP	3-7%

ANTI STRETCH MARKS

PRODUCT NAME:

SCH ACTIVES STRETCH MARKS

INCI NAME:

OLIGOPEPTIDE-24, ASIATICOSIDE

APPLICATION:

ANTI STRETCH MARKS

MANUF-ACTURER:

SPECIAL CHEMICALS



BARRIER REPAIR & ANTI INFLAMMATORY

PRODUCT NAME	INCI NAME	APPLICATION	MAKE	DOSAGE
Celaskin	Cetyl Myristate–Oleate–Palmitate (Celadrin®)	Fine lines & wrinkles,Firming and hydration enhancement,Sunburn / UV damage,Anti-inflammatory	Nutrition-21	5-10%
Kalahari Melon Oil	Kalahari Melon Oil	Strengthens the skin barrier, soothes inflammation, regulates sebum, & provides relief for sensitive or irritated skin.	Namib Desert	

AHA, BHA & PHA



PRODUCT NAME	INCI NAME	APPLICATION	MAKE
Microsponge C111A Glycolic acid Delivery System	Methyl Methacrylate/Glycol Dimethacrylate Crosspolymer (and) Glycolic Acid	Exfoliation,spot reduction and brightening, Reduced irritation due to Encaosulation	AMCOL
Microsponge® P 078A	Salicylic acid, methyl methacrylate/glycol dimethacrylate	Moisturising, Anti Acne	AMCOL
Brighten AHA	Malic Acid, Citric Acid, Lactic Acid, Tartaric Acid, Glycolic Acid, cocktail of Alpha Hydroxy Acids (AHAs)	Skin brightening, Gentle exfoliation, Improving skin texture, Reducing pigmentation and dullness	KALPTARU
SCH ShellCare GLUC Sol	Aqua, Polycaprolactone, Xanthan Gum, Gluconolactone, Polyvinyl Alcohol, Sorbitan Stearate, Propanediol, 1,2-Hexanediol, Caprylyl Glycol.	Encapsulated. Gentle exfoliant, Promotes skin renewal, Decreases appearance of fine lines and wrinkles , Reduces hyperpigmentation	SPECIAL CHEMICALS

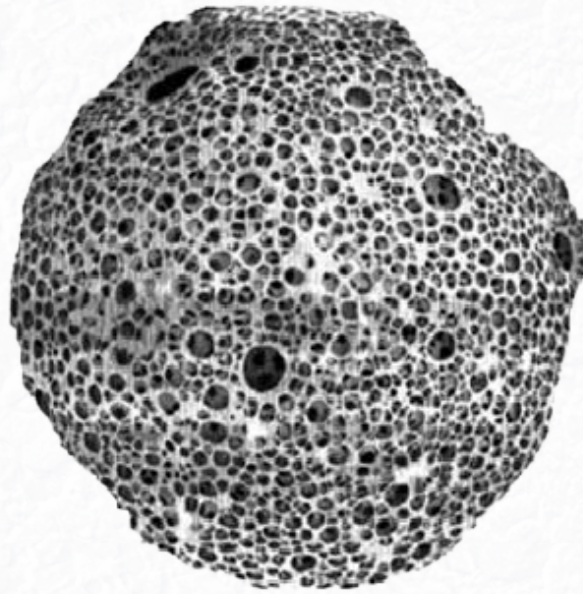
OILS



PRODUCT NAME	INCI NAME	APPLICATION	MAKE
Açaí Oil	Euterpe oleracea fruit oil	Hydration products, such as creams and lotions, anti-aging, pro-aging, for mature skin, the antioxidant action	Bielus
Andiroba Oil	Carapa guianensis seed oil	Hydration, targets the reduction of skin flaccidity and stretch marks.	Bielus
Annatto Oil	Bixa Orellana Seed oil, Helianthus Annuus (sunflower) seed oil, Glycine soja (soybean) oil, Tocopherol	The sun protection, SPF booster, tanning lotions and oils use the pigmenting power of annatto to help with the bronze effect.	Bielus
Babaçu Oil	Orbignya oleifera seed oil	high emollient power.	Bielus
Brazil Nut Oil	Bertholletia excelsa seed oil	Ideal for hydrating and anti-aging lotions, bath and massage oils, moisturizing bar and liquid soaps, hair conditioners, masks, leave-ins, as well as shaving and aftershave products.	Bielus
Buriti Oil	Mauritia flexuosa fruit oil	Moisturizing and emollient properties.	Bielus
Passion Fruit Oil	Passiflora edulis seed oil	Moisturizing properties at the deepest levels of the skin.	Bielus
Pracaxi Oil	Pentaclethra macroloba seed oil	Provides deep dermal hydration; ideal for use in creams, lotions, massage gels, ointments, and moisturizing oils.	Bielus
Copaiba Oil	Copaiba Oil	Anti-inflammatory agent, Anti-acne, Healing & soothing, Moisturizing, Anti-aging, Scalp care	Bielus

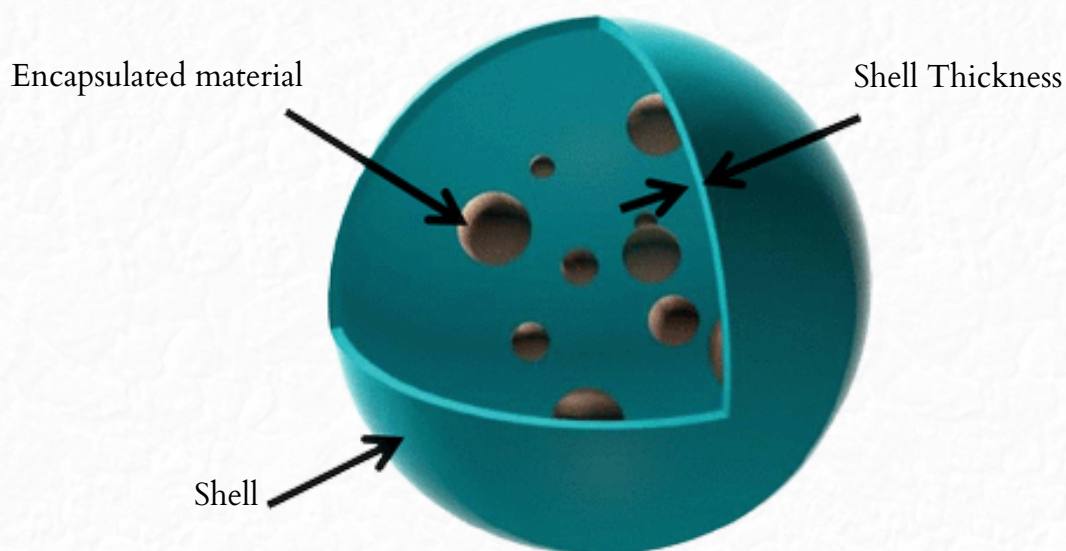
Pataua Oil	Pataua Oil	Rich in omega-9, it nourishes and strengthens hair, supports follicle health to reduce hair loss, deeply hydrates dry or mature skin, and helps soothe redness and sensitivities.	Bielus
Pequi Oil	Pequi Oil	Tames frizz, adds softness and shine, provides deep conditioning, soothes sensitive skin and scalp, and is rich in antioxidants.	Bielus
Mongongo Oil	Mongongo Oil	Enhances skin and hair radiance, offers UV protection and film-forming benefits, supports skin regeneration, and delivers strong antioxidant action with high Vitamin E content.	Namib Desert
Kalahari Melon Oil	Kalahari Melon Oil	Strengthens the skin barrier, soothes inflammation, regulates sebum, and provides relief for sensitive or irritated skin.	Namib Desert
Nara Oil	Nara Oil	Anti-Inflammatory and Anti-fungal	Namib Desert
Marula Oil	Marula Oil	Deeply nourishes and moisturizes the delicate facial skin.	Namib Desert
Tucuma Butter	Astrocaryum vulgare seed butter	Nutrition, hydration, restoration and emollience. Skin and Hair.	Bielus
Ucuuba Butter	Virola surinamensis seed butter	Perfect for creams, shampoos, and soaps with a smooth, creamy feel. Also ideal for bar cosmetics like soaps and lipsticks due to its hardness and dry touch.	Bielus
Bacuri Butter	Platonia insignis seed butter	Natural coloring agent, in addition to delivering a light and velvety texture to the skin as a post-application sensory.	Bielus
Cupuacu Butter	Theobroma grandiflorum seed butter	Cupuaçu butter has several benefits for both the skin and the hair.	Bielus
Murumuru Butter	Astrocaryum murumuru seed butter	High content of lauric acid, it has antimicrobial properties	Bielus
Cocoa Butter	Cocoa Butter	Deep Moisturization,Skin Softening,Healing & Soothing,Lip Care	Bielus

MICROSPONGE



PRODUCT NAME	INCI NAME	APPLICATION	MAKE	DOSAGE
Microsponge N 720 RE (RETINOL)	Cellulose, Retinol, Caprylic/Capric Triglyceride and BHT	Anti-aging, skin rejuvenation, and cellulite treatment	AMCOL	0.17%
RetinEZ	Cellulose, Retinol, Ascorbic Acid, Polysorbate 20 and Tocopherol	Anti-aging and skin rejuvenation products	AMCOL	
Microsponge C111A Glycolic acid Delivery System	Methyl Methacrylate/Glycol Dimethacrylate Crosspolymer and Glycolic Acid	Exfoliation,spot reduction and brightening, Reduced irritation due to Encaosulation	AMCOL	
Microsponge E® 520RA Retinaldehyde	Retinaldehyde, Methyl Methacrylate/Glycol Di-Methacrylate Crosspolymer, BHT	Anti-aging	AMCOL	0.10%
Microsponge N720 BK	Cellulose & Bakuchiol	Anti-aging, Anti acne	AMCOL	
Microsponge® P 078 A	Salicylic acid, methyl methacrylate/glycol dimethacrylate	Salicylic acid, methyl methacrylate/glycol dimethacrylate	AMCOL	

NANO ENCAPSULATED ACTIVE



PRODUCT NAME	INCI NAME	APPLICATION	MAKE	DOSAGE
HYASPHERE X	Hyaluronic Acid/poly isopropyl acrylamide copolymer, water	Hyaspherex is a patented self assembled polymeric colloid system made of Modified Hyaluronic acid Based Biopolymer, forms a Soft, spherical 3D Nanogel in water. Dual functionality, act as - Delivery system & Active Ingredient. (Nanoencapsulation). Increase skin penetration, cellular Uptake, enhance Solubility, stability, Reduce Active Degradation Reduction, increases Wound healing, Photoprotection & antioxidant Activity. Penetrate by both intercellular & intracellular pathways.	NABSOLUTE	2-5%
HYASPEREX Revive+	Glycyrrhiza glabra root extract (and) Allium cepa bulb extract (and) Centella asiatica leaf extract (and) Hyaluronic Acid/Poly Isopropyl Acrylamide Copolymer (and) Maltodextrin (and) 1,3-Propanediol (and) Pentylene glycol (and) Aqua/Water	Anti-inflammatory, smoothing, wound healing, Hydrating	NABSOLUTE	2-5%

GOLD & DIAMOND CONJUGATES (ANTI AGEING)



PRODUCT NAME	INCI NAME	APPLICATION	MAKE	DOSAGE
SCH ACTIVES GLUTA GOLD C	GLUTATHIONE, UBIQUINONE,GOLD	Gold in skincare offers antioxidant and anti-inflammatory benefits, helping to protect the skin and reduce irritation. It brightens the complexion, enhances radiance, and improves skin firmness and elasticity, reducing signs of sagging.	SPECIAL CHEMICALS	0.3%
SCH ACTIVES ANTIOX C	GOLD,ASCORBICACID, FERULICACID	Gold provides antioxidant protection against free radical damage while also reducing inflammation and soothing the skin, resulting in a healthier, more radiant appearance.	SPECIAL CHEMICALS	0.3-0.5%
SCH ACTIVES DIAMOND RES C	PALMITOYL PENTAPEPTIDE-4, RESVERATROL, COLLOIDALDIAMOND	Diamond nanoparticles offer anti-aging benefits by reducing fine lines and wrinkles, while also enhancing skin tone and clarity to deliver a natural, radiant glow.	SPECIAL CHEMICALS	0.3-0.5%
SCH ACTIVES DIAMOND C	DIAMOND POWDER, PENTAPEPTIDE-3, ACETYL HEXAPEPTIDE-8	Botox like effect, wound healing, anti aging	SPECIAL CHEMICALS	0.3%

ANTIACNE



PRODUCT NAME	INCI NAME	APPLICATION	MAKE	DOSAGE
SCH ShellCare AZE	Aqua Polycaprolactone Xanthan gum Azelaic acid Polyvinyl alcohol Sorbitan stearate Propanediol 1,2-hexanediol Caprylyl glycol	Encapsulated. Anti Acne	Special Chemicals	3-5%
SCH ShellCare AZEPlus	Aqua Polycaprolactone Xanthan gum Azelaic acid Palmitoyl tripeptide-36 Polyvinyl alcohol Sorbitan stearate Propanediol 1, 2-hexanediol Caprylyl glycol	Encapsulated. Anti Acne. Reduces acne, brightens dark spots, and soothes irritation	Special Chemicals	3-5%

TANNING ENHANCER

PRODUCT NAME:
SCH SHELLCARE LIPOTAN

INCI NAME:
ACETYL HEXAPEPTIDE-1

APPLICATION:
ENCAPSULATED, TANNING ENHANCER

MANUF-ACTURER:
SPECIAL CHEMICALS



MOISTURIZER



PRODUCT NAME	INCI NAME	APPLICATION	MAKE	DOSAGE
Super Moisturizing MAX	Polyglutamic acid, Sodium Hyaluronate, Hydrolyzed Hyaluronic acid, Hydroxypropyltrimonium Hyaluronate, Sodium Acetylated Hyaluronate, Lactobacillus/Collagen/Mesembryanthemum Crystallinum Leaf Extract Ferment Lysate	Skin moisturizing	A&PEP	3-10%
SCH Blend Hydrant	Aqua Threalose Sodium PCA Sodium hyaluronate Sodium polyglutamate Methylpropanediol, Caprylyl glycol	Filmogen- PH regulating, Moisturising- filmogenic, Deep moisturising and repairing , Skin and hair conditioner, Anti-pollution- environmental stress- procollagen	Special Chemicals	
STELLA-500	Water, Betaine, Sodium PCA, Sodium Lactate, Threonine, Valine, Isoleucine, Glutamic Acid, Arginine, Phenylalanine, Tryptophan, Histidine, Lysine HCl, Proline, Sodium Chloride, Potassium Chloride, Calcium Chloride, Glucose, Trehalose, Sorbitol, 1,2-Hexanediol	Skin Moisturizing	A&PEP	3-10%

MULTI CLAIM/ MULTIFUNCTIONAL

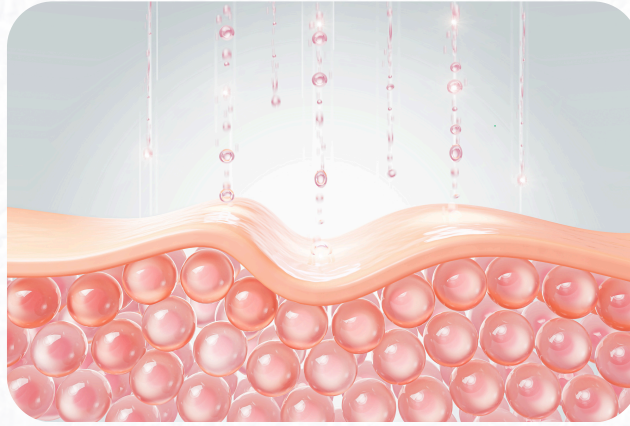
PRODUCT NAME	INCI NAME	APPLICATION	MAKE	DOSAGE
VolcanEX-F (clay)	Bacillus/Houttuynia Cordata Leaf Extract/Volcanic Ash Ferment Filtrate, Bacillus/Spirodela, Polyrhiza Extract/Volcanic Ash Extract Ferment Filtrate, Caprylyl Glycol, 1,2-Hexanediol	Anti-Inflammation, Anti-Aging, Anti-Oxidant, Anti acne	A&PEP	10%
SCH AlgaeTech Porphyridium	Porphyridium cruentum extract, Benzyl alcohol, Glyceryl caprylate, Glyceryl undecylenate	A red microalga rich in sulfated exopolysaccharides (SEP), known for its powerful hydrating, anti-aging, and anti-inflammatory properties.	Special Chemicals	1%
DEVIL-PEP	Bacillus/Trapa Japonica Fruit Extract Ferment, Filtrate, 1,2-Hexanediol, Ethylhexylglycerin	Anti-Wrinkle, Cell-Regeneration, Anti-Hair Loss, Anti Acne	A&PEP	3-5%
Phenoliva Active 10	Olea Europaea (Olive) Fruit Extract, Citric Acid	Skin brightening (Inhibit Melanin synthesis), Skin soothing, Anti-aging, Antioxidant, UV protection, Skin healing	GAIA TECH	0.1 - 1%

EYE



PRODUCT NAME	INCI NAME	APPLICATION	MAKE
SCH Blend Eye Lift	Pullulan Acetyl Tetrapeptide-5 Dipeptide-2 Acetyl Hexapeptide-8 Acetyl Octapeptide-3 Phytonadione Epoxide Aqua Polyglyceryl-6 Caprylate Polyglyceryl-4 Caprate Methylpropanediol, Caprylyl Glycol	Draining-Decongestive, Anti glycation-BTX lifting effect, Periorbicularrhytidosis-Anticoagulant, Detoxifying-Anti inflammatory, Lifting - Texturizing- Moisturizing	Special Chemicals
SCH Actives Eyelash Grow	Aqua Xanthan gum Acetyl tetrapeptide-3 Copper tripeptide-1 Propanediol 1,2-Hexanediol Caprylyl glycol	Prevents and stops hair loss. Stimulates eyelash hair growth	Special Chemicals

COLLAGEN PEPTIDES



PRODUCT NAME	INCI NAME	APPLICATION	MAKE
SCH PeptCare CuT1	Copper tripeptide-1	Repairs and rejuvenates the skin, improves firmness and elasticity, accelerates healing and tissue repair.	Special Chemicals
SCH PeptCare T1	Tripeptide-1	Stimulates skin regeneration, improves texture and firmness, and promotes more hydrated and elastic skin.	Special Chemicals
SCH PeptCare PaP4	Palmitoyl pentapeptide-4	Reduces wrinkles, improves skin texture, and increases hydration and firmness.	Special Chemicals
SCH PeptCare PaT5	Palmitoyl tripeptide-5	Improves skin firmness, reduces wrinkles, and increases skin elasticity and density.	Special Chemicals
SCH PeptCare PaT1	Palmitoyl tripeptide-1	Smooths fine lines, reduces deep wrinkles, and improves skin hydration and elasticity.	Special Chemicals
SCH PeptCare T10Ci	Tripeptide-10 citrulline	Improves the structure of collagen, restoring the skin's suppleness and resilience, and smooths lines and wrinkles.	Special Chemicals
SCH PeptCare OO20	Oligopeptide-20	Accelerates the repair of damaged skin, improves healing and promotes cell regeneration.	Special Chemicals
SCH PeptCare DD4	Decapeptide-4	Helps in skin repair and healing, promoting firmer and healthier skin.	Special Chemicals

SCH PeptCare H9	Hexapeptide-9	Accelerates wound healing, promotes skin regeneration, and improves firmness and texture.	Special Chemicals
SCH PeptCare T2	Tripeptide-2	Reduces wrinkles, improves skin elasticity, and delays skin aging, preserving a youthful appearance.	Special Chemicals
SCH PeptCare H11	Hexapeptide-11	Maintains the firmness and elasticity of the skin, prevents collagen degradation, and contributes to healthier and more resistant skin to aging.	Special Chemicals

DEPIGMENTING PEPTIDES



PRODUCT NAME	INCI NAME	APPLICATION	MAKE
SCH PeptCare H2	Hexapeptide-2	Skin whitening, reduction of dark spots, and improvement of uneven tone.	Special Chemicals
SCH PeptCare OO51	Oligopeptide-51	Reduction of hyperpigmentation, improvement of skin tone, and control of excess sebum.	Special Chemicals

SPF BOOSTER

PRODUCT NAME	INCI NAME	APPLICATION	MAKE	DOSAGE
ROSE-FRC	Glycerin, Water, Rosa Centifolia Flower Extract	Enhances the UV protection efficacy of formulations by increasing UV reflection, especially against UV-B rays. Acts as a natural SPF booster	A&PEP	0.1-0.5%
Annato Oil	Bixa Orellana Seed oil, Helianthus Annuus (sunflower) seed oil, Glycine soja (soybean) oil, Tocopherol	The sun protection, SPF booster, tanning lotions and oils use the pigmenting power of annatto to help with the bronze effect.	Bielus	

KALPTARU NATURALS

OILS

PRODUCT NAME	INCI NAME	APPLICATION	MAKE
Banana Oil	Banana Oil	Stimulate collagen formation to boost skin elasticity. It is knownto soothe skin, slow down hair loss, moisturize scalp, preventdandruff and provide the skin a protective shield against pollutionand UV rays.	KALPTARU
Amaranth Oil	Amaranth Oil	Deeply hydrates, nourishes, and protects the skin while potentiallyhelping to reduce signs of aging, soothe irritation, and promotewound healing	KALPTARU
Arnica Oil	Arnica Oil	Anti-inflammatory, wound healing, Moisturizing, Soothing,Dandruff, Antibacterial, Hair growth, Scalp health	KALPTARU
Kumkumadi Oil	Kumkumadi Oil	Reduces dark spots, pigmentation, and blemishes	KALPTARU

EXTRACTS

PRODUCT NAME	INCI NAME	APPLICATION	MAKE
Rice Alkane	Rice Alkane	Help with hair growth and protect hair from frizz and damage	KALPTARU
Saw Palmetto Extract 10%(Powder)	Saw Palmetto Extract 10%(Powder)	Help with hair loss	KALPTARU
Bharingraj Water Extract	Bharingraj Water Extract	Hair growth, skin health, and wound healing	KALPTARU
Heena Extract	Heena Extract	Strengthens Hair, cooling, anti-inflammatory, and antimicrobial properties.	KALPTARU
Indigo extract	Indigo extract	Anti-aging, protect against environmental damage, brighten the complexion, support skin healing.	KALPTARU
Black Tea Extract	Black Tea Extract	Anti-aging, soothing inflammation, and promoting hair growth.	KALPTARU
Coconut oil extract	Coconut oil extract	Moisturizing, Treat Acne, Reduce Inflammation, Even Skin Tone, Silicon replacement	KALPTARU
Manjistha dry extract	Manjistha dry extract	Anti-inflammatory, reduce redness	KALPTARU
Saffron extract	Saffron extract	Treating acne, lightening skin, and improving skin, texture.	KALPTARU

ANTIOXIDANT

PRODUCT NAME	INCI NAME	APPLICATION	MAKE
Tocopherol 50% (Natural)	Tocopherol (Natural)	Reduces hyperpigmentation, Protects skin from sun damage, Improves skin health, Acts as a powerful antioxidant	KALPTARU

SKIN BRIGHTENING

PRODUCT NAME	INCI NAME	APPLICATION	MAKE
Tetrahydro Curcumin	Tetrahydrocurcumin	Anti-aging, skin brightening, and sunprotection formulations	KALPTARU
Brighten AHA	Malic Acid, Citric Acid, Lactic Acid, Tartaric Acid, Glycolic Acid, cocktail of Alpha Hydroxy Acids (AHAs)	Skin brightening, Gentle exfoliation, Improving skin texture, Reducing pigmentation and dullness	KALPTARU

MILK

PRODUCT NAME	INCI NAME	APPLICATION	MAKE	DOSAGE
Coco Malai	Coconut Milk	Moisturizing, Skin Soothing, Nourishing, Conditions hair, reduces frizz,	KALPTARU	1-10%



📍 Kalptaru Naturals , 139, Preet Colony, Ambala
City, Ambala, Haryana -134003

☎ +91 96675 51115